

20' Standard Steel Container



Description	Dimension	
	Metric	U.S.
Internal Length	5.898 m	19'4"
Internal Width	2.352 m	7'9"
Internal Height	2.392 m	7'10"
External Length	6.058 m	19'10 1/2"
External Width	2.438 m	8'0"
External Height	2.591 m	8'6"
Door Opening Width	2.340 m	7'8"
Door Opening Height	2.280 m	7'6"
Lashing Rings	Five on each top and bottom rails, capacity 2,000 Kg; Three on each corner post, capacity 1,500 Kg	

40' Standard Steel Container



Description	Dimension	
	Metric	U.S.
Internal Length	12.032 m	39'6"
Internal Width	2.352 m	7'9"
Internal Height	2.392 m	7'10"
External Length	12.192 m	40'0"
External Width	2.438 m	8'0"
External Height	2.591 m	8'6"
Door Opening Width	2.340 m	7'8"
Door Opening Height	2.280 m	7'6"
Lashing Rings	Ten on each top and bottom rails, capacity 2,000 Kg; Three on each corner post, capacity 1,500 Kg	

40' High Cube Steel Container



Description	Dimension	
	Metric	U.S.
Internal Length	12.033 m	39'6"
Internal Width	2.352 m	7'9"
Internal Height	2.698 m	8'10"
External Length	12.192 m	40'0"
External Width	2.438 m	8'0"
External Height	2.896 m	9'6"
Door Opening Width	2.340 m	7'8"
Door Opening Height	2.585 m	8'6"
Lashing Rings	10 on each top and bottom rails, capacity 2,000 Kg; Three on each corner post, capacity 1,500 Kg	

45' High Cube Steel Container



Description	Dimension	
	Metric	U.S.
Internal Length	13.556 m	44'6"
Internal Width	2.352 m	7'9"
Internal Height	2.701 m	8'10"
External Length	13.716 m	45'0"
External Width	2.438 m	8'0"
External Height	2.896 m	9'6"
Door Opening Width	2.340 m	7'8"
Door Opening Height	2.588 m	8'6"
Lashing Rings	12 on each top and bottom rails, capacity 2,000 Kg; Three on each corner post, capacity 1,500 Kg	

Open Top Containers

20' Open Top Containers



Description	Dimension	
	Metric	U.S.
Internal Length	5.900 m	19'4"
Internal Width	2.350 m	7'8"
Internal Height	2.310 m	7'7"
Door Opening Width	2.340 m	7'8"
Door Opening Height	2.260 m	7'5"
Roof Opening Length	5.500 m	18'1"
Roof Opening Width	2.220 m	7'3"

40' Open Top Containers



Description	Dimension	
	Metric	U.S.
Internal Length	12.040 m	39'6"
Internal Width	2.350 m	7'8"
Internal Height	2.310 m	7'7"
Door Opening Width	2.340 m	7'8"
Door Opening Height	2.260 m	7'5"
Roof Opening Length	11.600 m	38'1"
Roof Opening Width	2.140 m	7'0"

Collapsible Flat Rack Containers

20' Flat Rack Containers



Description	Dimension	
	Metric	U.S.
Internal Length	6.040 m	19'10"
Internal Width	2.230 m	7'4"
Internal Height	2.230 m	7'4"
External Length	6.058 m	19'11"
External Width	2.438 m	8'0"
External Height	2.591 m	8'6"

40' Flat Rack Containers



Description	Dimension	
	Metric	U.S.
Internal Length	12.054 m	39'7"
Internal Width	2.230 m	7'4"
Internal Height	2.230 m	7'4"
External Length	12.192 m	40'0"
External Width	2.438 m	8'0"
External Height	2.591 m	8'6"

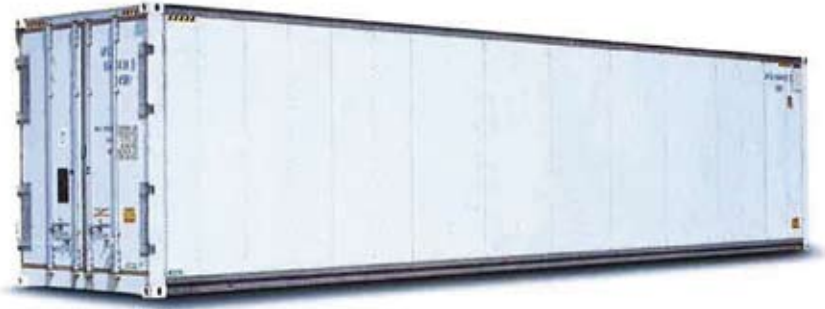
REFRIGERATED CONTAINERS



20' HIGH CUBE REEFER

Description	Metric
Cubic Capacity	28.300 cubic m
Payload (Weight)	27.450 kg
Tare Weight	3.030 Kg
Max Gross Weight	30.480 kg

Dimensions	
Description	Metric
Internal Length	5.446 m
Internal Width	2.294 m
Internal Height	2.263 m
External Length	6.058 m
External Width	2.438 m
External Height	2.591 m
Door Opening Width	2.290 m
Door Opening Height	2.260 m
Cooling Unit	8.820 Kcal/h
Controlled Atmosphere	Yes
Modified Atmosphere	Yes
Dehumidification	Yes



40' HIGH CUBE REEFER

Description	Metric
Cubic Capacity	67.500 cubic m
Payload (Weight)	28.760 kg
Tare Weight	4.260 Kg
Max Gross Weight	33.020 kg

Dimensions	
Description	Metric
Internal Length	11.583 m
Internal Width	2.294 m
Internal Height	2.548 m
External Length	12.192 m
External Width	2.438 m
External Height	2.896 m
Door Opening Width	2.290 m
Door Opening Height	2.500 m
Cooling Unit	8.820 Kcal/h
Controlled Atmosphere	Yes
Modified Atmosphere	Yes
Dehumidification	Yes